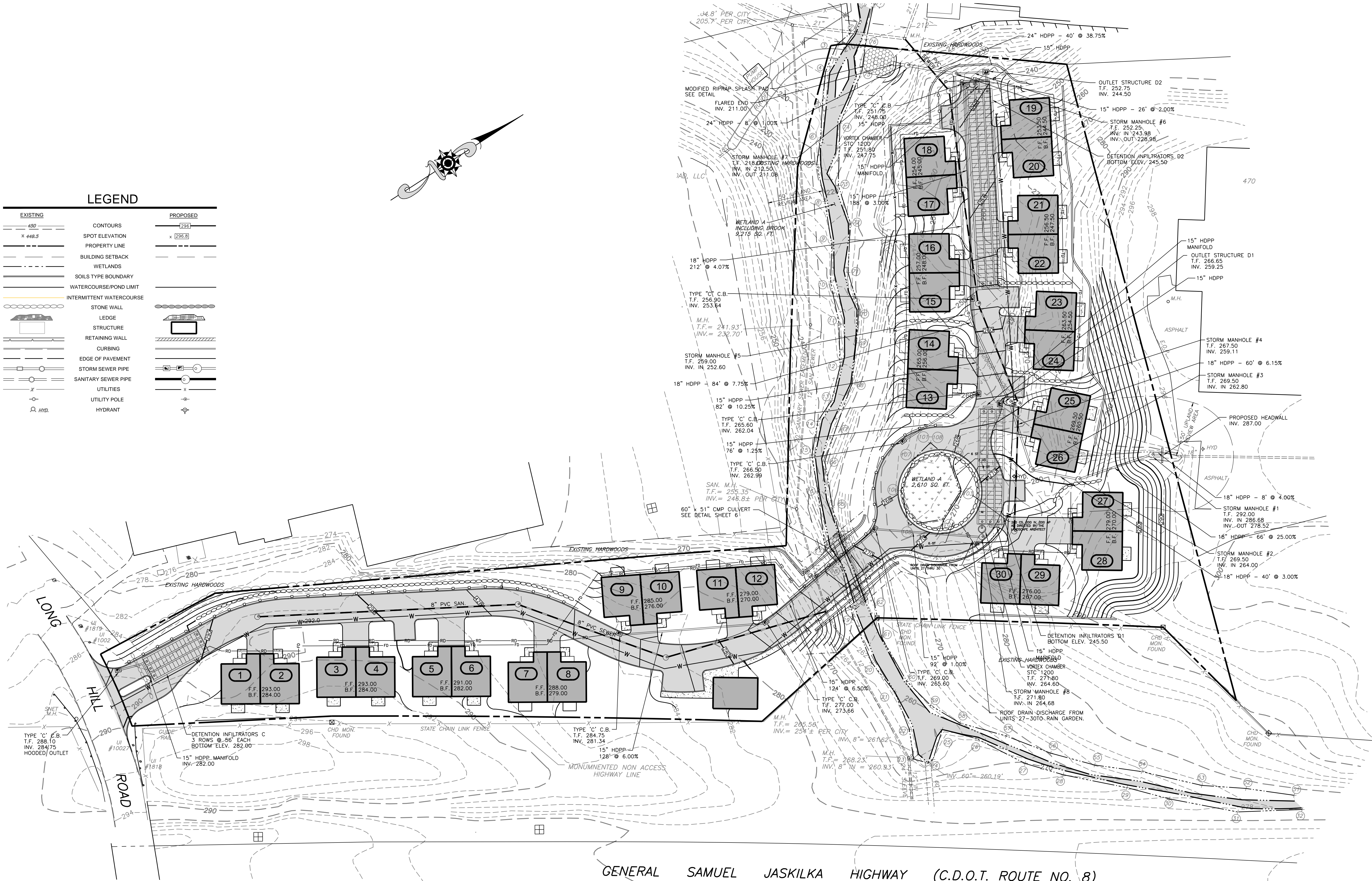


**LEGEND**

EXISTING	PROPOSED



GENERAL SAMUEL JASKILKA HIGHWAY (C.D.O.T. ROUTE NO. 8)

Professional Engineer #20,212

REVISIONS	
NO.	DESCRIPTION

GRADING & UTILITY PLAN  
**"The Crossroads"**  
 An Active Adult Community  
 96 LONG HILL CROSS ROAD - SHELTON, CONNECTICUT  
 Prepared For  
**S & G of Shelton, L.L.C.**

**James R. Swift**  
 Professional Engineer - Landscape Architect  
 102 Village Drive - Shelton, CT 06484  
 Phone (203) 926-9665 Facsimile (203) 926-9665  
 www.jswilpe.com jim@jswilpe.com

SCALE: 1" = 40'  
 0 20' 40'  
 FILE: -  
 DATE: Mar. 23, 2018 SHEET 2 OF 6