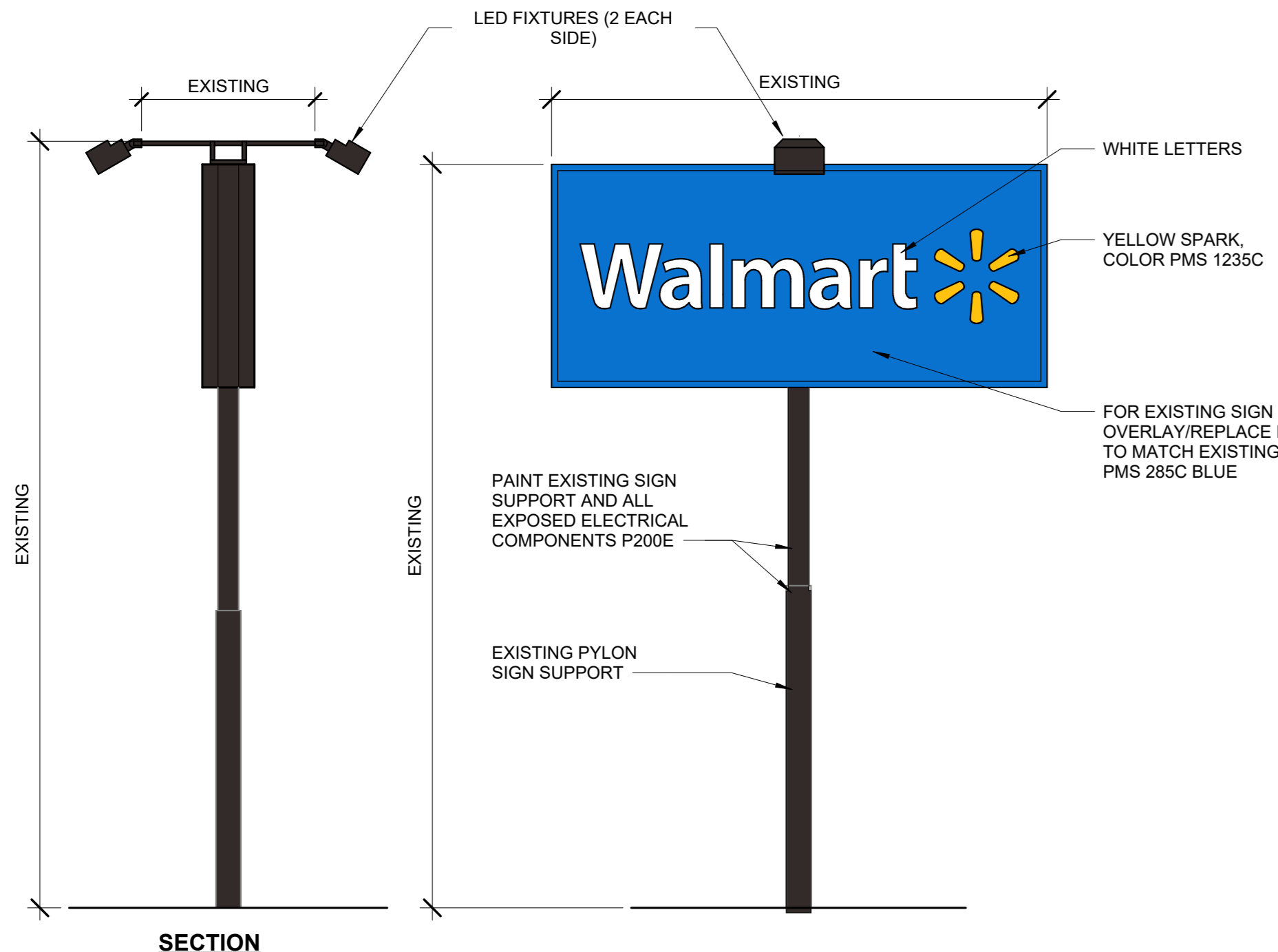


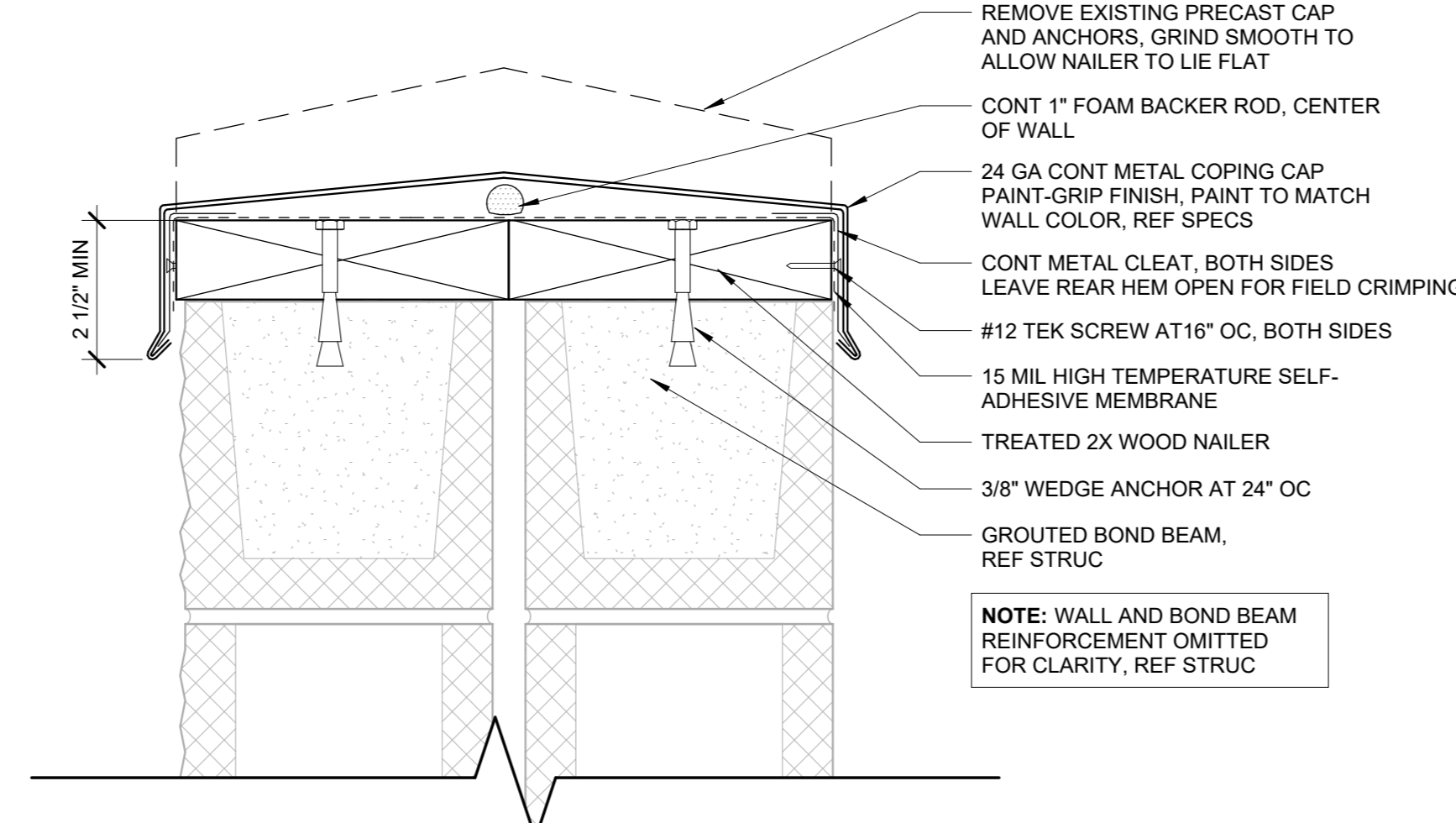


EXISTING SIGNAGE SCHEDULE						NEW SIGNAGE SCHEDULE					
SIGNAGE LOCATION	QTY	ILLUMINATED	COLOR	SIZE	TOTAL AREA	SIGNAGE LOCATION	QTY	ILLUMINATED	COLOR	SIZE	TOTAL AREA
<b>FRONT SIGNAGE</b>						<b>FRONT SIGNAGE</b>					
WALMART	1	LED	WHITE	5'-6"	298.00 SF	WALMART W/ SPARK	1	LED	WHITE / YELLOW	5'-6"	298.00 SF
SPARK	1	LED	YELLOW	8'-0"	298.00 SF	PHARMACY	1	N/A	WHITE	1'-6"	17.63 SF
PHARMACY	1	N/A	WHITE	1'-0"	8.38 SF	PICKUP W/ ARROW	1	LED	WHITE	2'-6"	40.83 SF
OUTDOOR LIVING	1	N/A	WHITE	2'-0"	49.47 SF	OUTDOOR	1	N/A	WHITE	2'-0"	20.67 SF
ADDRESS	1	N/A	WHITE	1'-0"	N/A SF	VISION	1	N/A	WHITE	1'-6"	8.19 SF
<b>TOTAL FRONT SIGNAGE</b>					<b>355.85 SF</b>	<b>TOTAL FRONT SIGNAGE</b>					<b>385.32 SF</b>
<b>TOTAL BUILDING SIGNAGE</b>					<b>355.85 SF</b>	<b>TOTAL BUILDING SIGNAGE</b>					<b>385.32 SF</b>

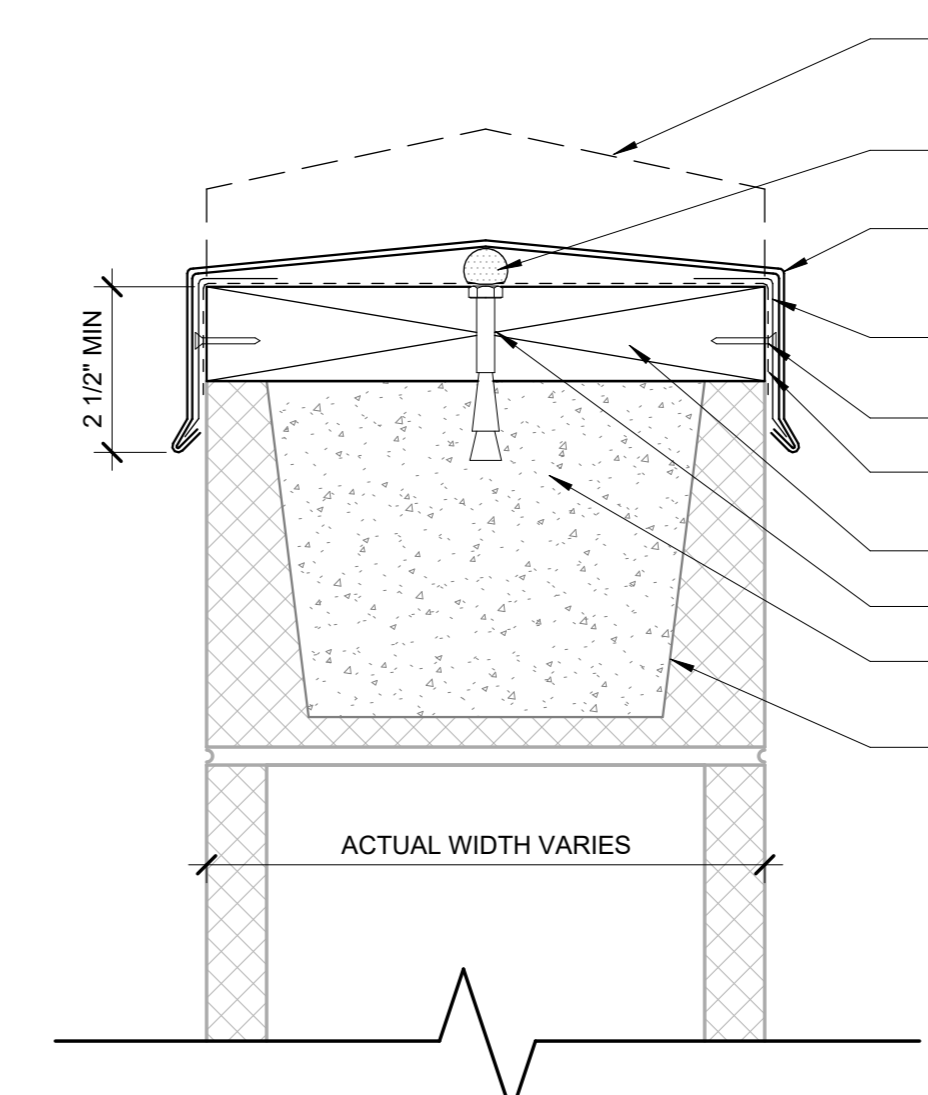
- ### SIGNAGE GENERAL NOTES
- SIGNAGE FURNISHED BY WALMART AND INSTALLED BY GC THROUGH OWNER ASSIGNED SIGN CONTRACTOR
  - ALL EXISTING WALMART EXTERIOR SIGNAGE IS TO REMAIN IN PLACE ON BUILDING UNTIL GC SIGN COMPANY IS ON SITE
    - EXISTING SIGNAGE WILL THEN BE REMOVED, PATCH AND REPAIR WORK WILL BE COMPLETED AT SIGN LOCATIONS, AND SIGNAGE WILL BE INSTALLED PER PLANS
    - A TEMPORARY BANNER WILL BE INSTALLED PRIOR TO REMOVAL OF EXISTING EXTERIOR SIGNAGE
      - BANNER WILL REMAIN IN PLACE UNTIL ALL MODIFICATIONS AND/OR REPAIRS HAVE BEEN COMPLETED AND SIGNAGE IS INSTALLED
    - TEMPORARY BANNER WILL BE APPROXIMATELY 125 SF, 5' x 25'
    - EXTERIOR SIGN WORK NEEDS TO BE SCHEDULED COORDINATED, AND COMPLETED DURING WEEK 6 OF CONSTRUCTION SCHEDULE
  - RELOCATION OF EXTERIOR TENANT SIGN
    - GC TO COORDINATE REMOVAL OF TENANT SIGN WITH WALMART CM AND TENANT PRIOR TO BEGINNING WORK
    - GC TO DELIVER REMOVED TENANT SIGN TO TENANT GC TO PROVIDE JUNCTION BOXES AND CIRCUITRY TO TENANT SIGNAGE LOCATION SHOWN, REF ELEC
    - NEW TENANT SIGNAGE FURNISHED AND INSTALLED BY TENANT
  - GC RESPONSIBILITIES
    - BY END OF FIRST WEEK OF CONSTRUCTION, REVIEW EXISTING CONSTRUCTION WHERE SIGN(S) WILL BE INSTALLED
      - IF EXISTING CONDITIONS DO NOT MATCH SIGN ATTACHMENT DETAILS SHOWN, REQUEST APPROVAL FROM CONSTRUCTION MANAGER TO SUBMIT RFI IN ACCORDANCE WITH SPECS
      - NOTE DIFFERENCES IN CONSTRUCTION, INCLUDING DIMENSIONS, AND INCLUDE PHOTOGRAPHS FOR CLARIFICATION
    - PROVIDE SUBSTRATE SUITABLE FOR INSTALLATION OF SIGNAGE, REF SIGN DETAILS FOR LIGHTED ID/LOGO SIGNS
    - PROVIDE JUNCTION BOXES AND CIRCUITRY TO "Walmart" and "spark" SIGNAGE
      - EXISTING (B) BOXES FROM "WAL-MART" SIGNAGE MAY BE REUSED
    - INSTALL ACCESS DOORS AND FRAMES IN GYPSUM BOARD CEILING(S) IF REQ'D BY RELOCATION OF EXISTING TENANT SIGNAGE
    - VERIFY VOLTAGE AT CIRCUITS FEEDING LIGHTED SIGNAGE, REF ELEC
    - MAKE FINAL TERMINATIONS ON LIGHTED SIGNAGE
    - REMOVE ALL LIT ID/LOGO SIGNS AND UNLIT EXTERIOR STUD MOUNTED BUILDING SIGNS, UNLESS NOTED OTHERWISE
    - MAKE REQ'D EXTERIOR WALL PENETRATIONS, INSTALL CONDUIT, AND SEAL PENETRATIONS PER SPECS



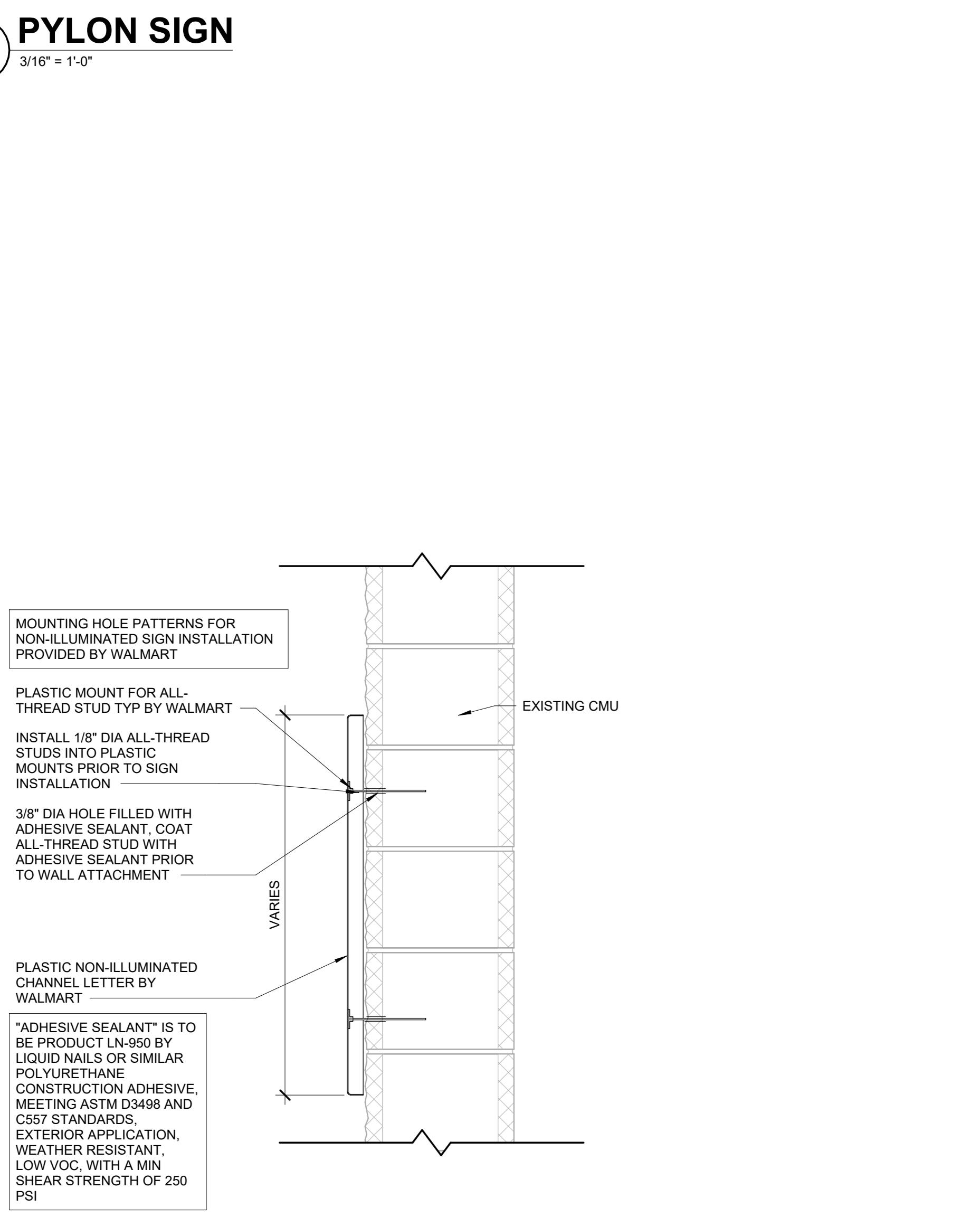
**13 PYLON SIGN**  
3/16" = 1'-0"



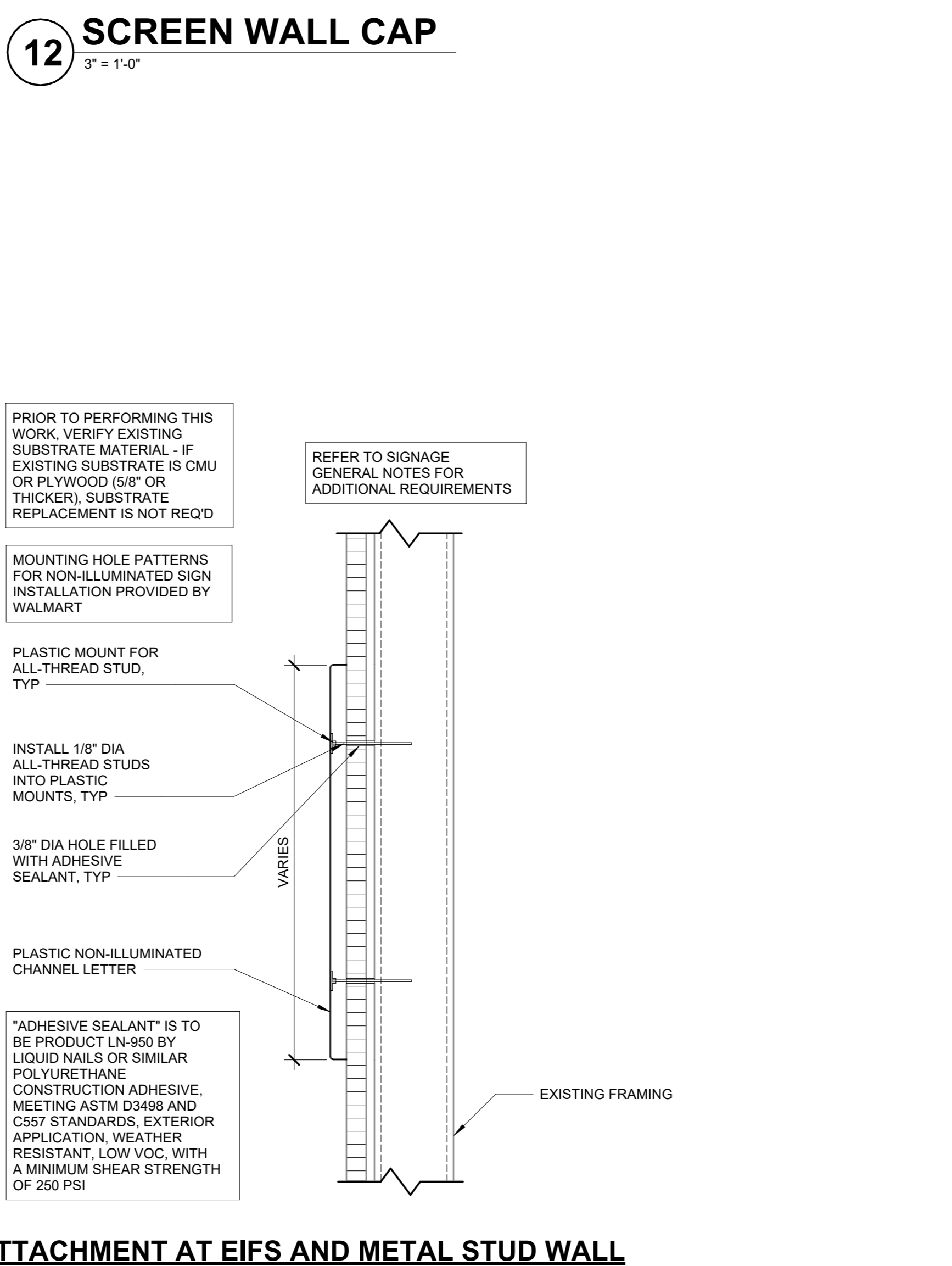
**12 SCREEN WALL CAP**  
3" = 1'-0"



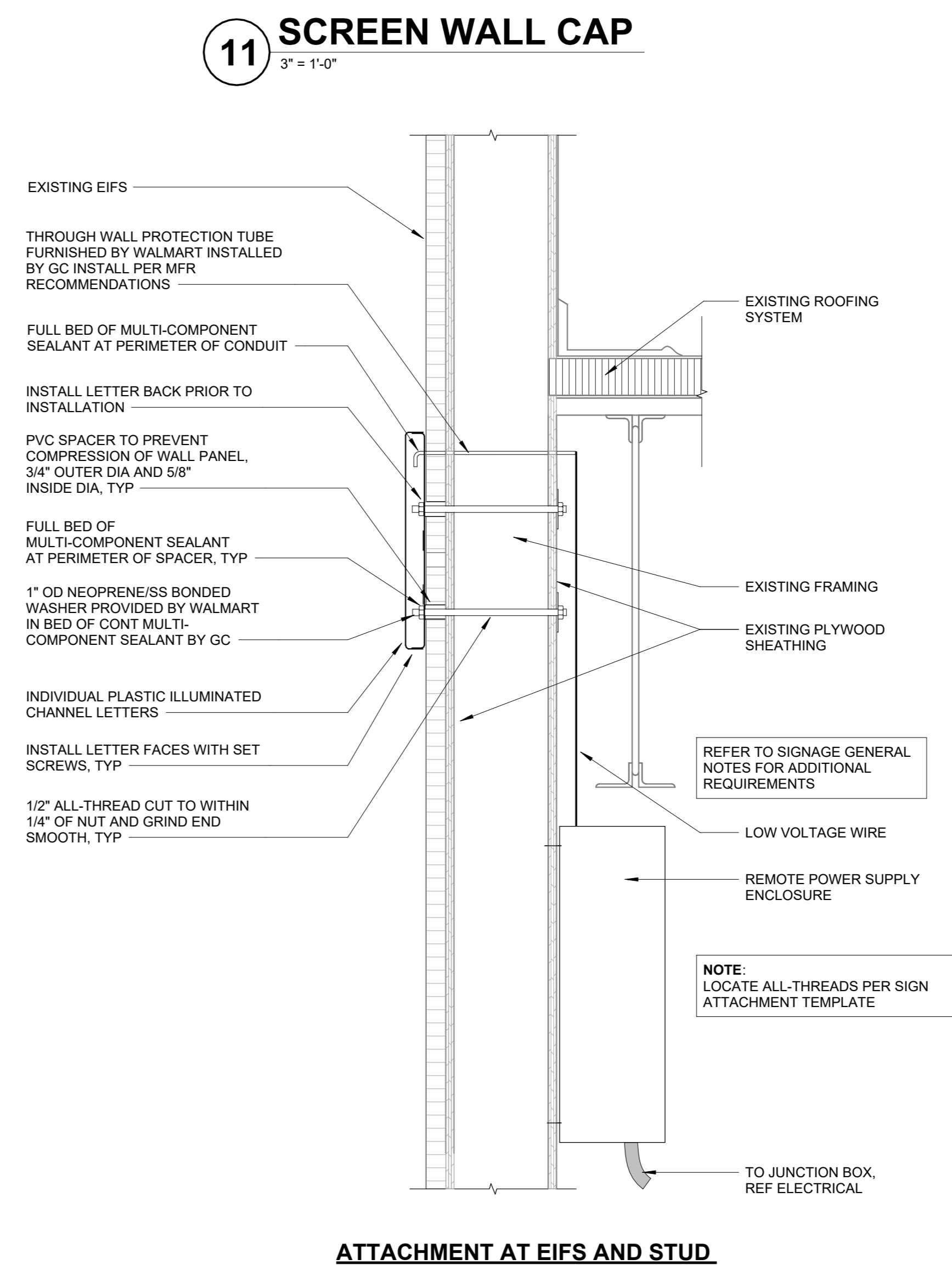
**11 SCREEN WALL CAP**  
3" = 1'-0"



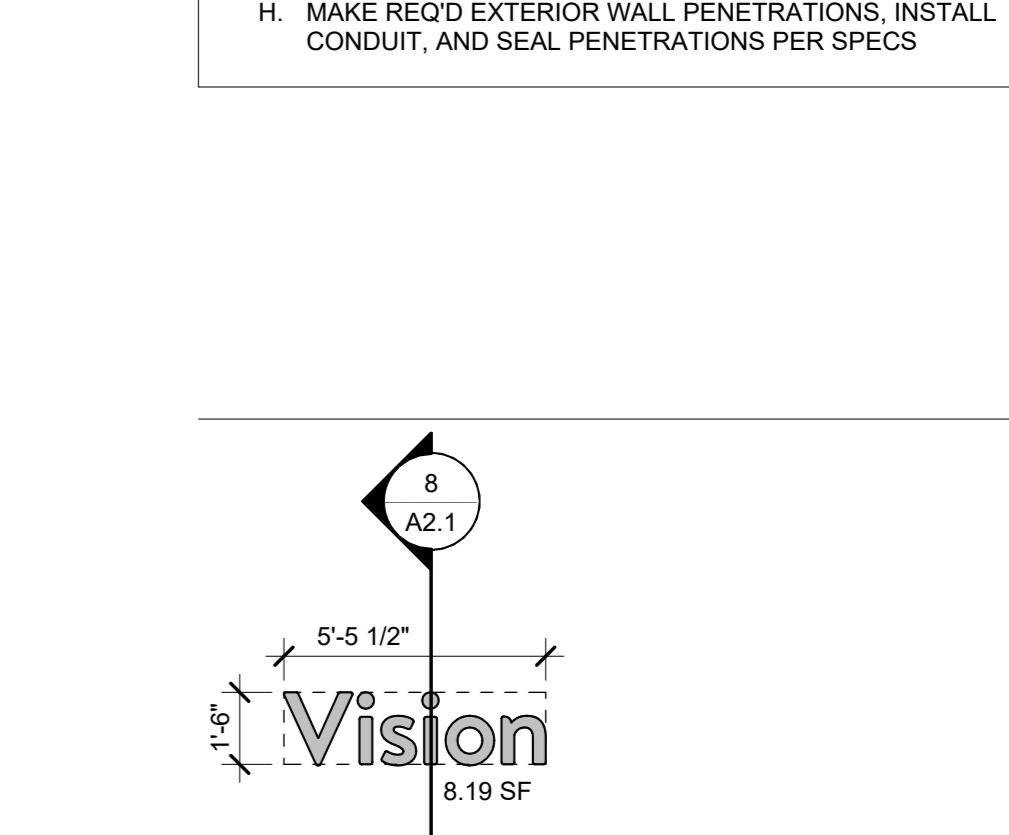
**8 SIGN ATTACHMENT AT CMU WALL**  
1 1/2" = 1'-0"



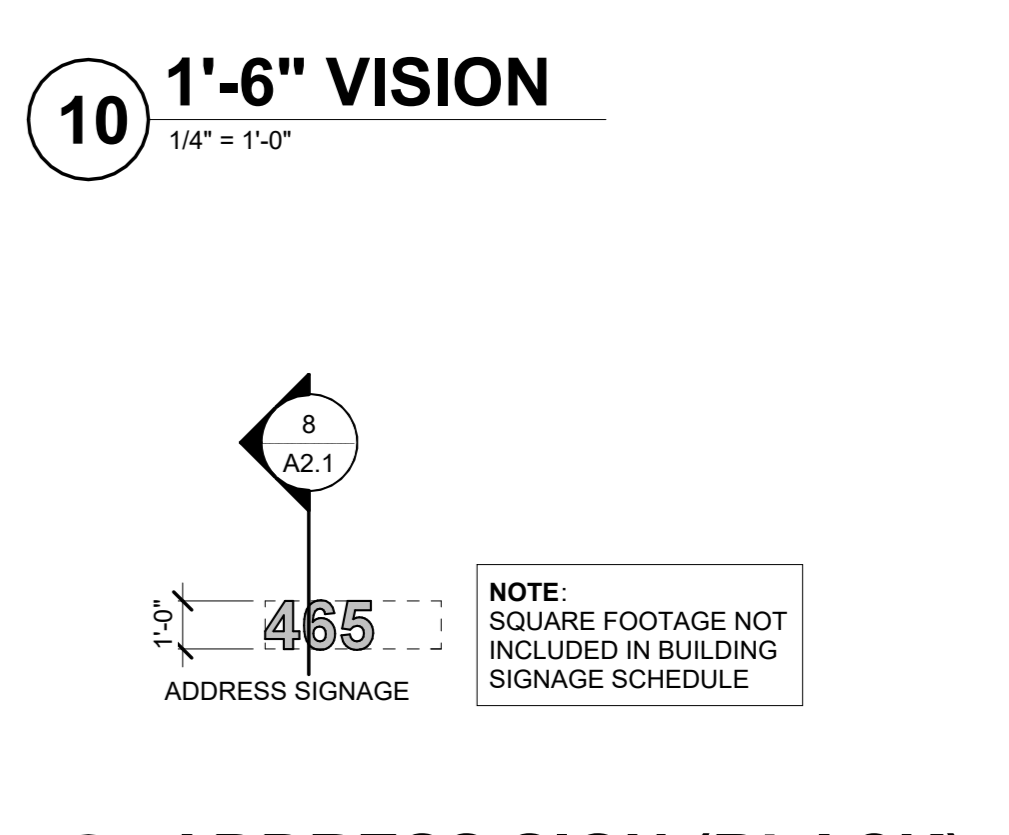
**7 SIGNAGE ATTACHMENT AT EIFS**  
1 1/2" = 1'-0"



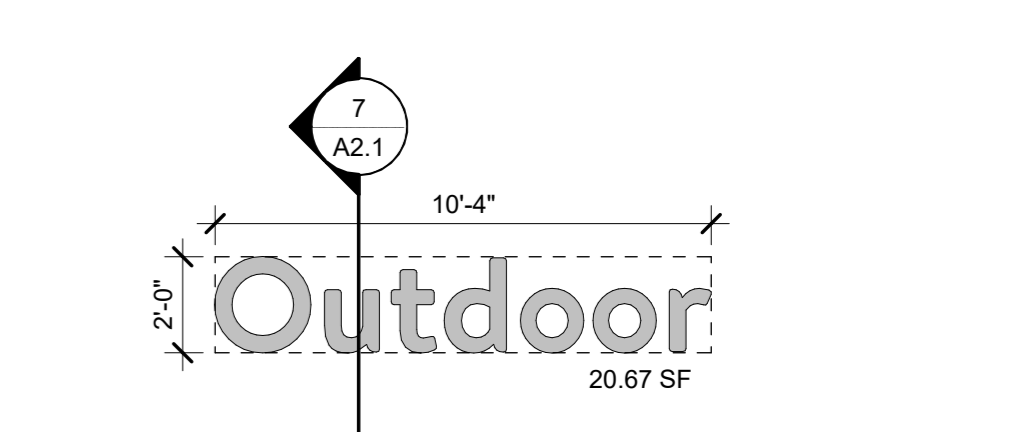
**6 ILLUMINATED SIGNAGE ATTACHMENT**  
1 1/2" = 1'-0"



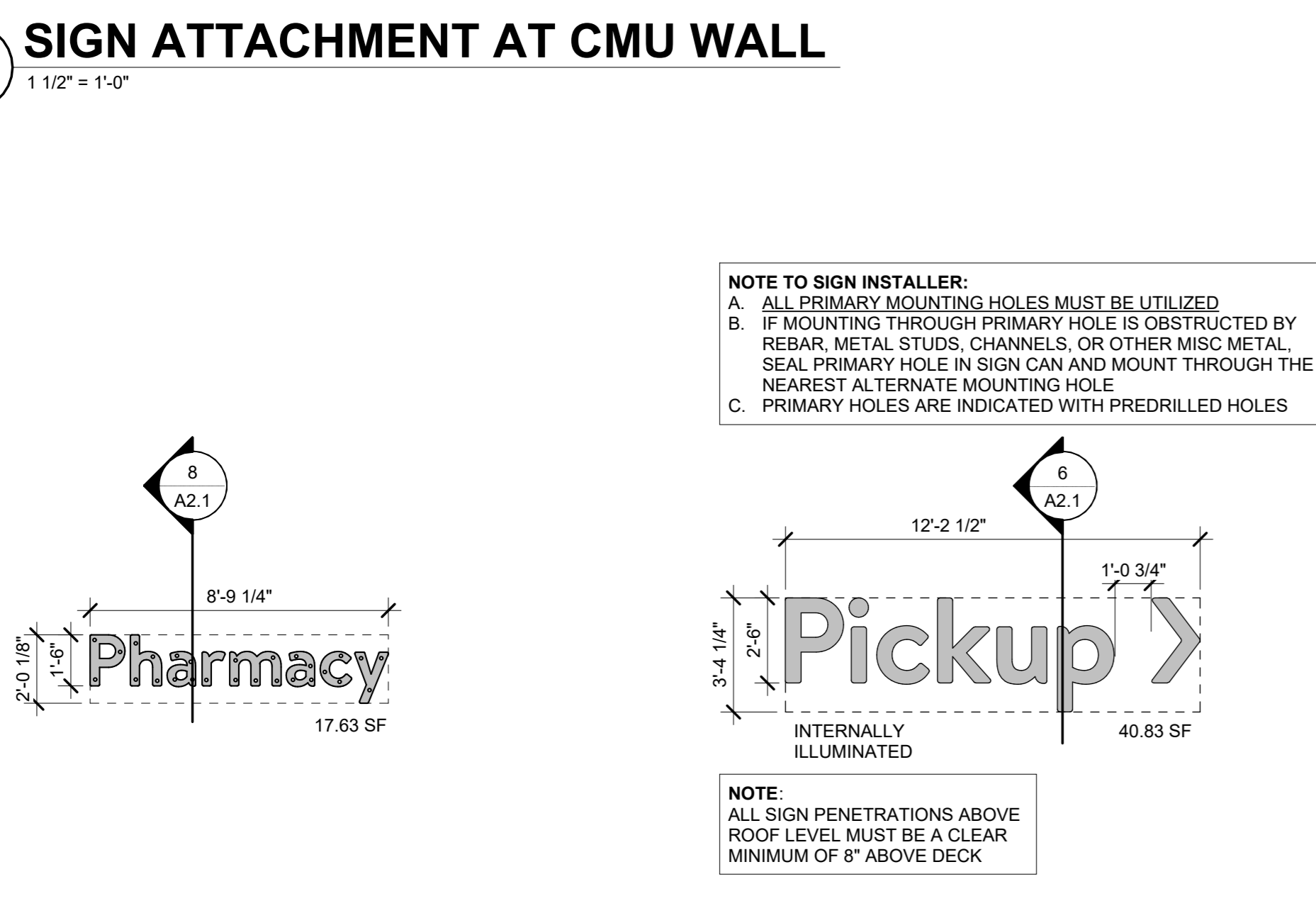
**10 1'-6" VISION**  
1/4" = 1'-0"



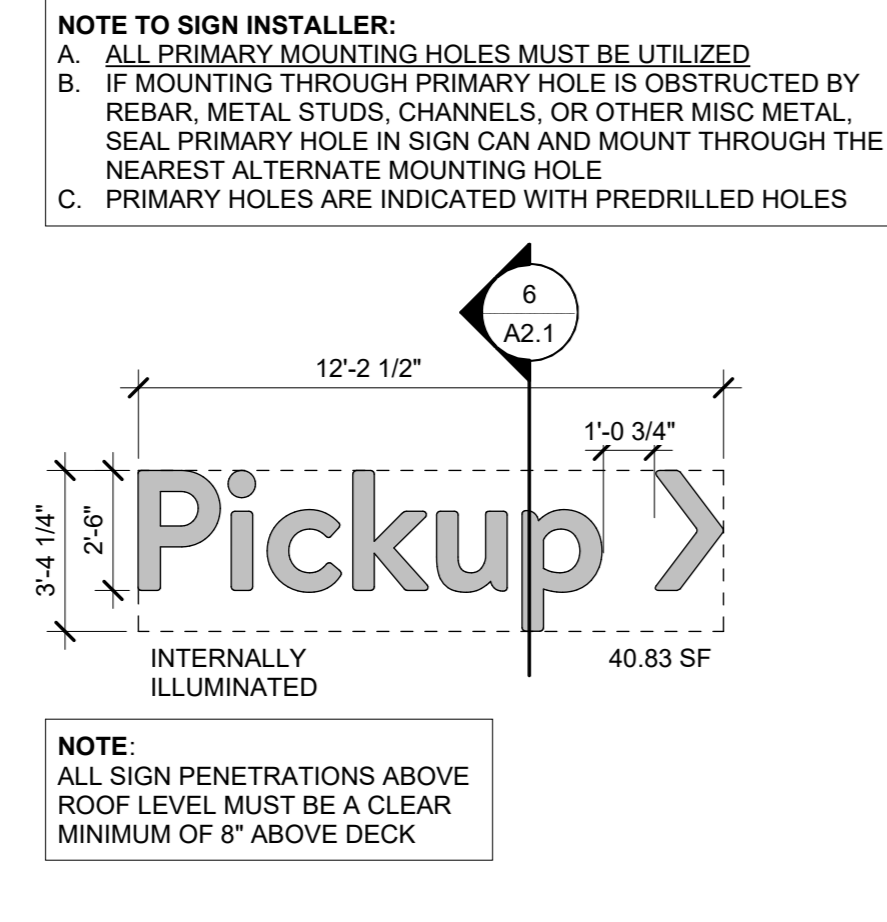
**9 ADDRESS SIGN (BLACK)**  
1/4" = 1'-0"



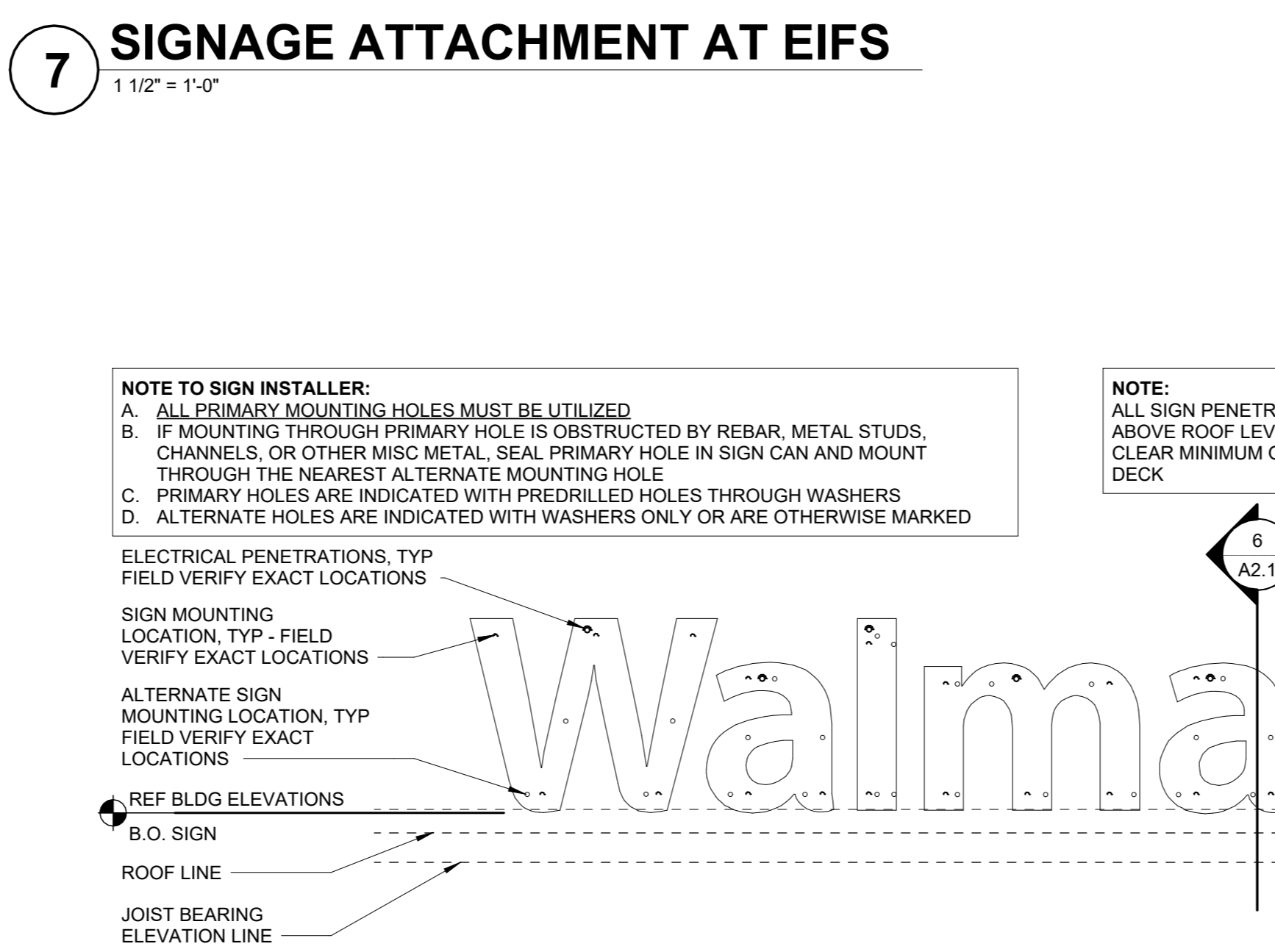
**5 2'-0" OUTDOOR**  
1/4" = 1'-0"



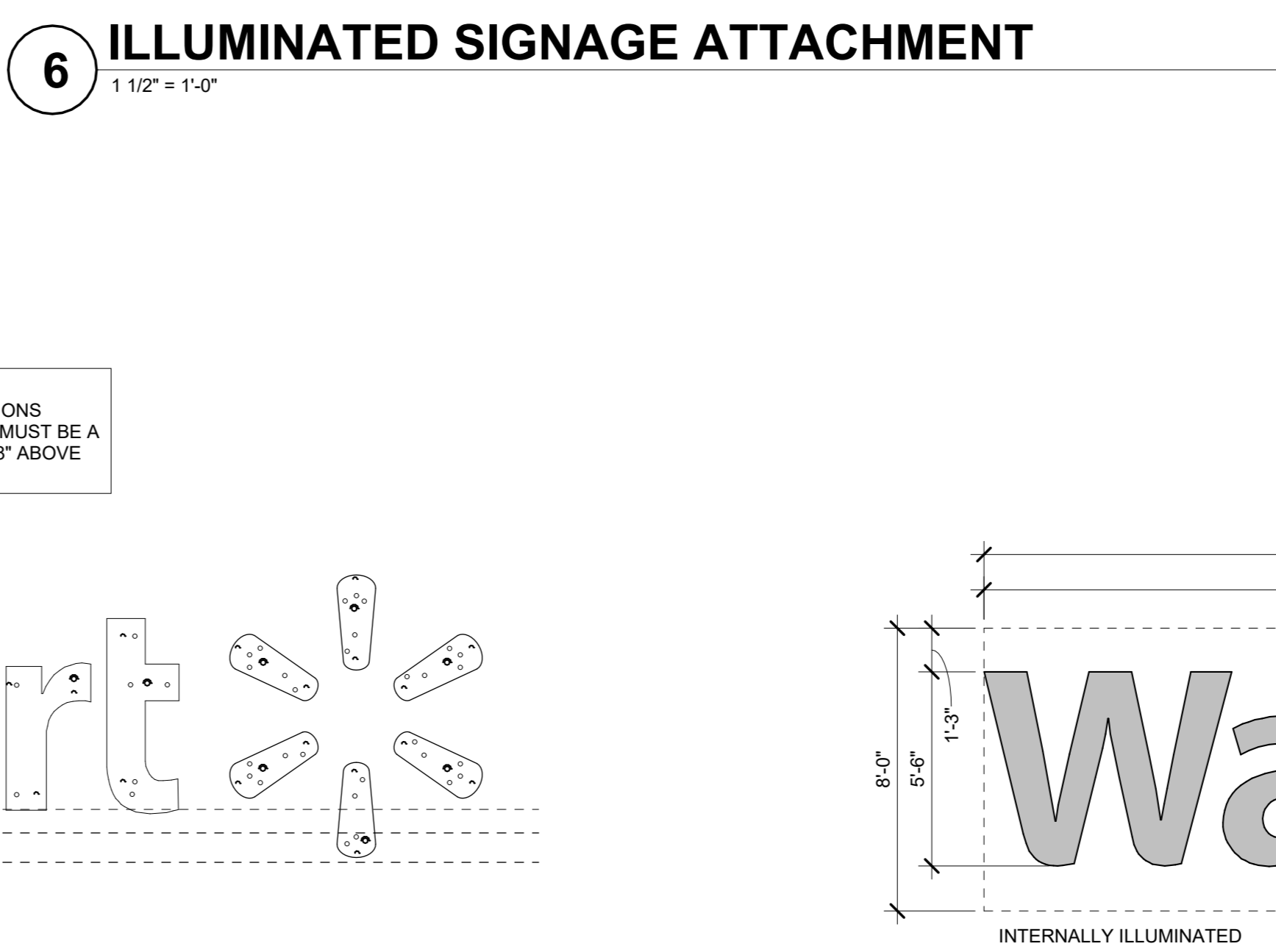
**4 1'-6" PHARMACY**  
1/4" = 1'-0"



**3 2'-6" PICKUP RIGHT ARROW**  
1/4" = 1'-0"



**2 5'-6" WALMART SIGN MOUNTING DIAGRAM**  
1/4" = 1'-0"



**1 5'-6" WALMART SIGN**  
1/4" = 1'-0"

NY License No. 02187  
MMA ARCHITECTURE PC  
3207 Route 66, Neptune, NJ 07753  
1732-616-2300 1732-699-7548

STIPULATION FOR REUSE  
THIS DRAWING WAS PREPARED FOR THE PROJECT AND SITE SPECIFIC TO THE LOCATION AND DATE OF ISSUE. IT IS NOT TO BE REUSED FOR ANY OTHER PROJECT WITHOUT THE WRITTEN PERMISSION OF MMA ARCHITECTURE PC. ANY REUSE OF THIS DRAWING WITHOUT THE WRITTEN PERMISSION OF MMA ARCHITECTURE PC IS STRICTLY PROHIBITED.

CONSULTANTS

Walmart  
SHELTON, CT  
465 BRIDGEPORT AVE  
STORE NO. 02163.1008  
JOB NUMBER: 273-24-015  
PROTO: 116

ISSUE BLOCK

NO.	DESCRIPTION	DATE

CHECKED BY: MMA  
DRAWN BY: MMA  
PROTO CYCLE: 10/25/24  
DOCUMENT DATE: 12/09/24

STATE OF CONNECTICUT  
REGISTERED ARCHITECT  
12/6/2024

EXTERIOR DETAILS AND SIGNAGE FS PAINT

SHEET: A2.1